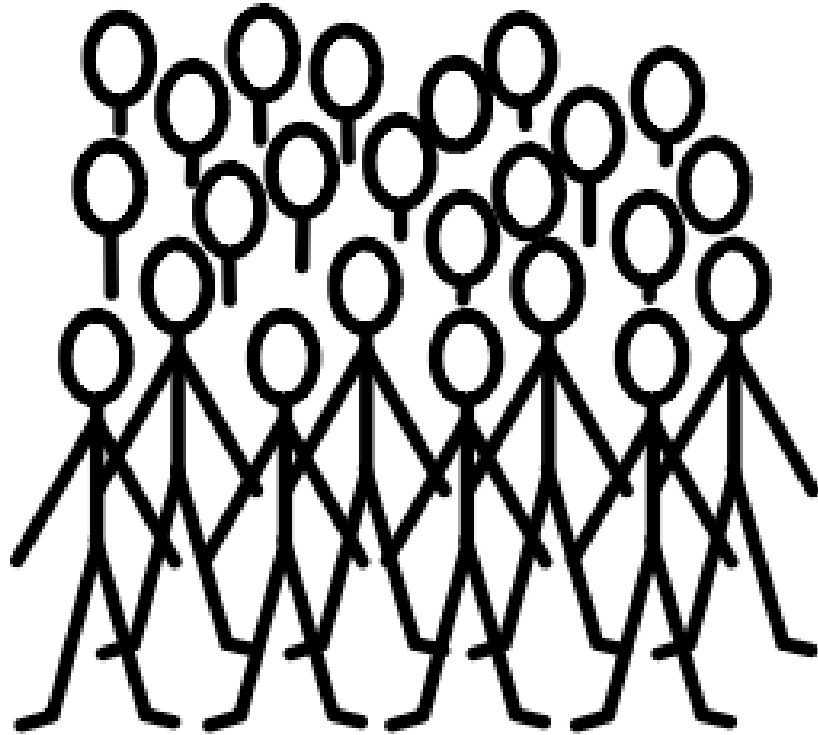


**NUOVO CORONAVIRUS**  
**spiegato con la C.A.A.**

**TANTE PERSONE**



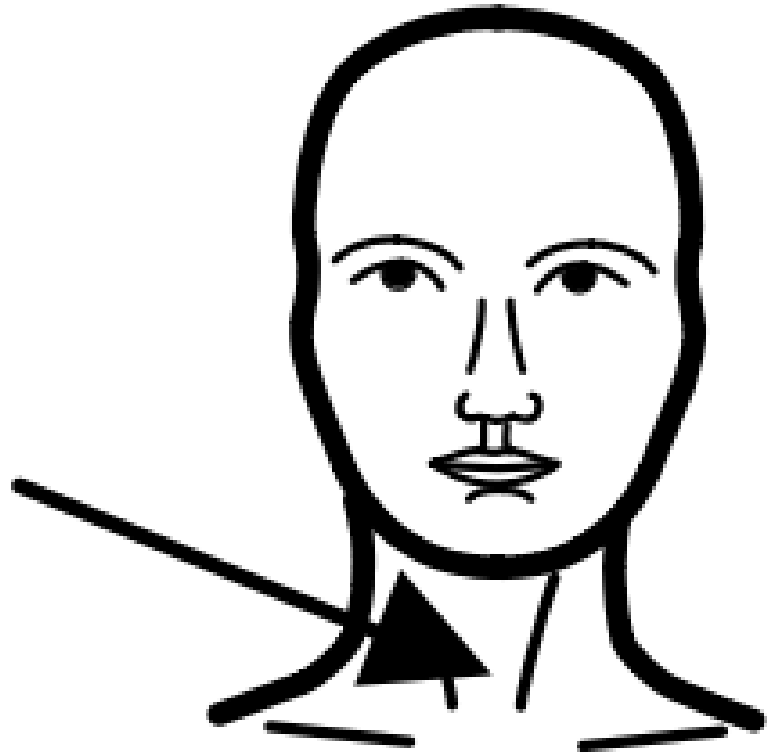
**SONO AMMALATE**



**HANNO LA FEBBRE**



**HANNO MAL DI GOLA**



**HANNO LA TOSSE**



**HANNO IL  
RAFFREDDORE**



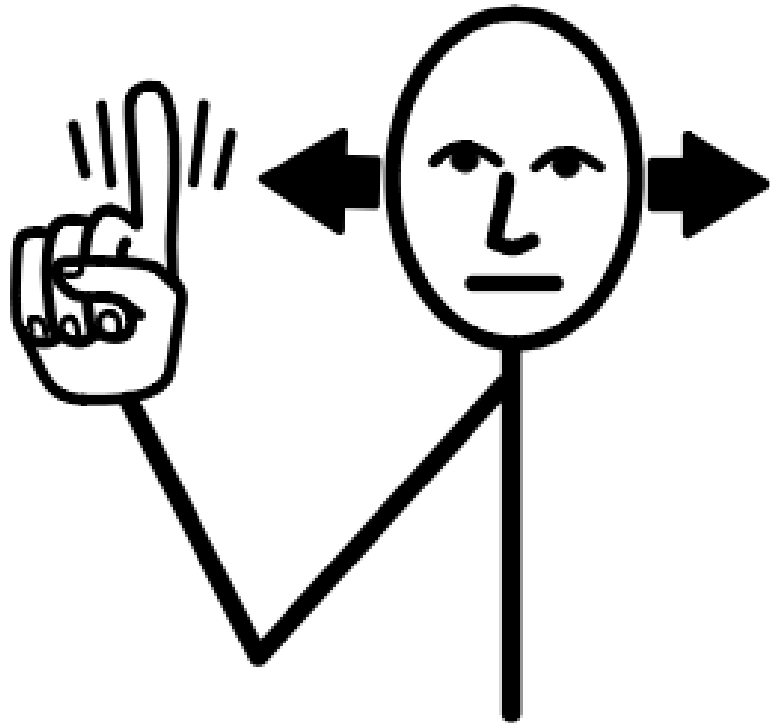
**I DOTTORI**



**DICONO DI**



**NON**

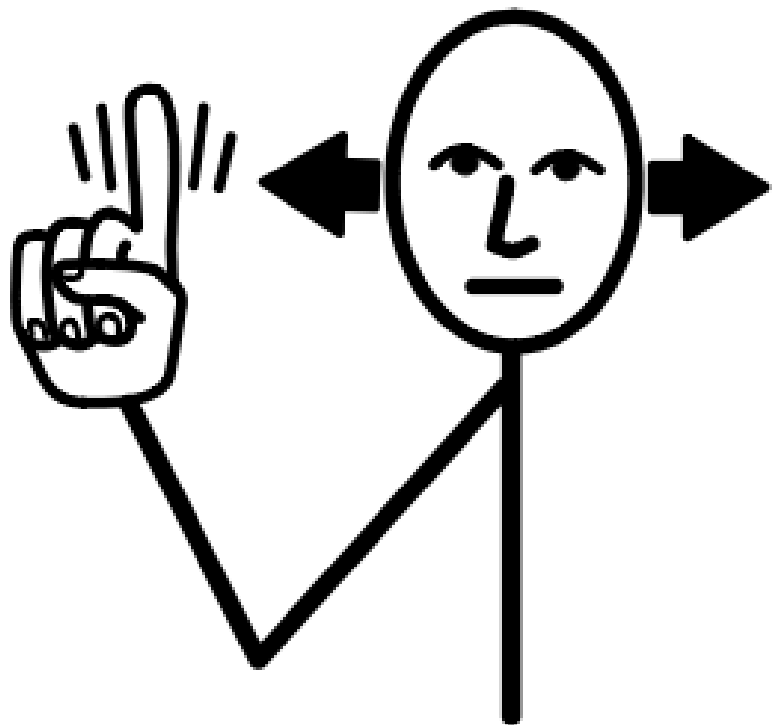


**USCIRE**





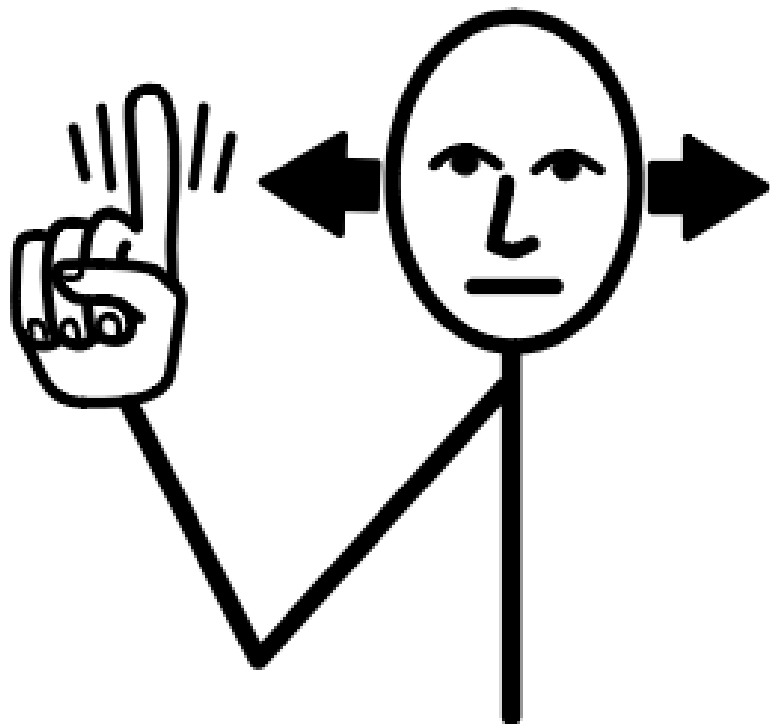
**NON**



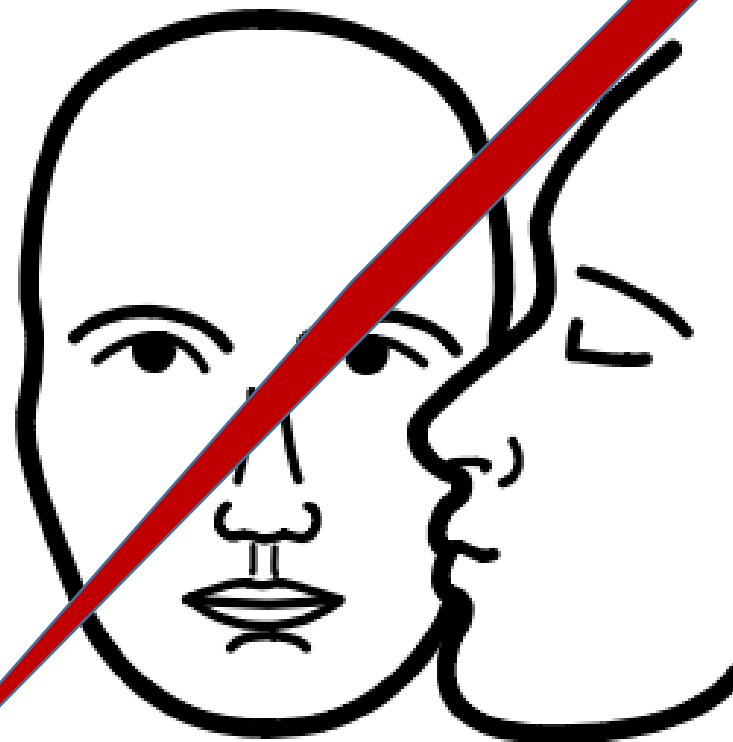
**ABBRACCIARE**



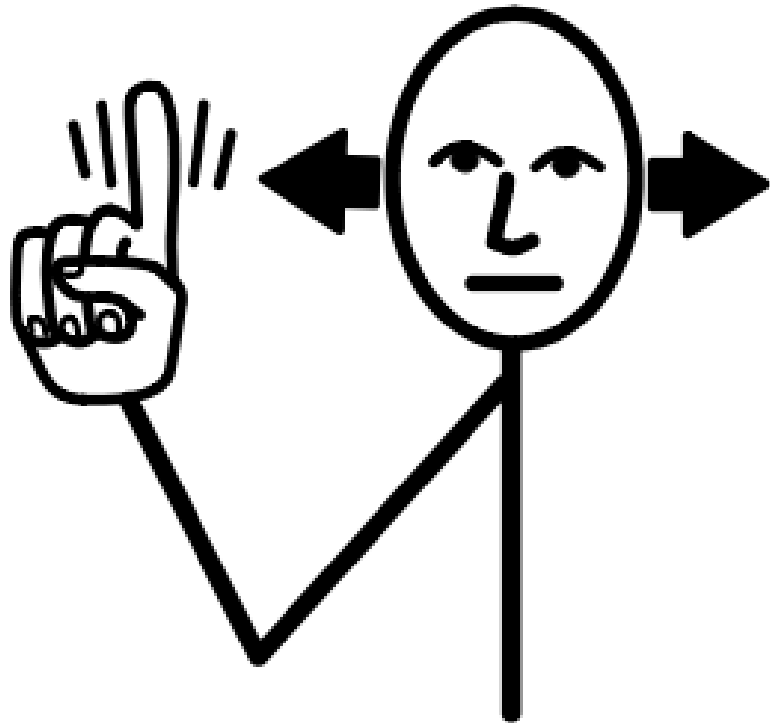
**NON**



**BACIARE**



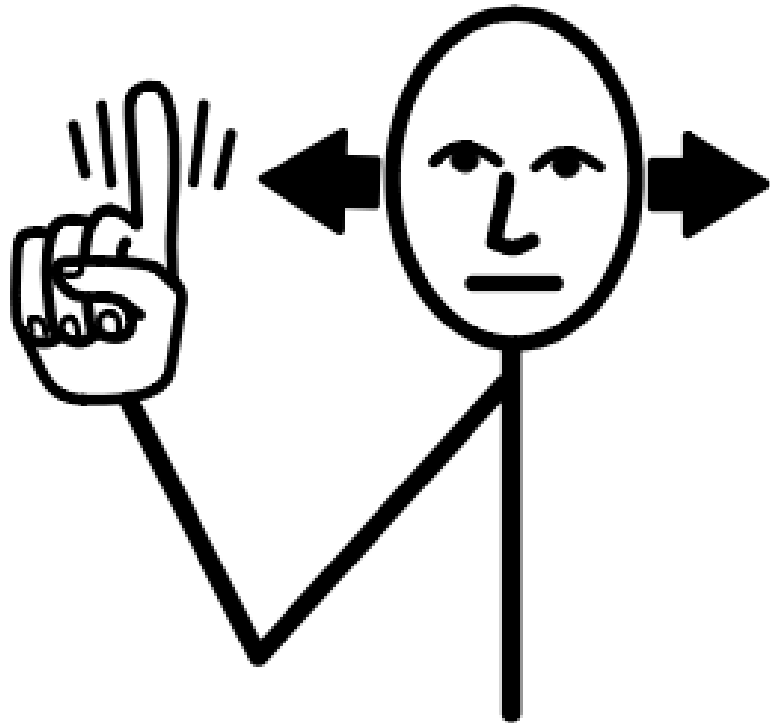
**NON**



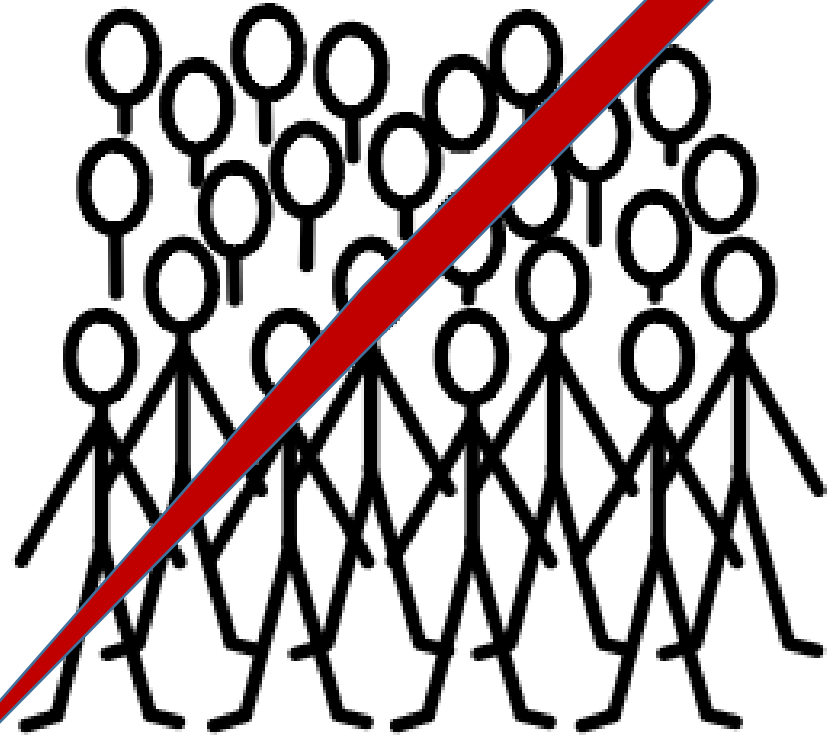
**DARE LA MANO**



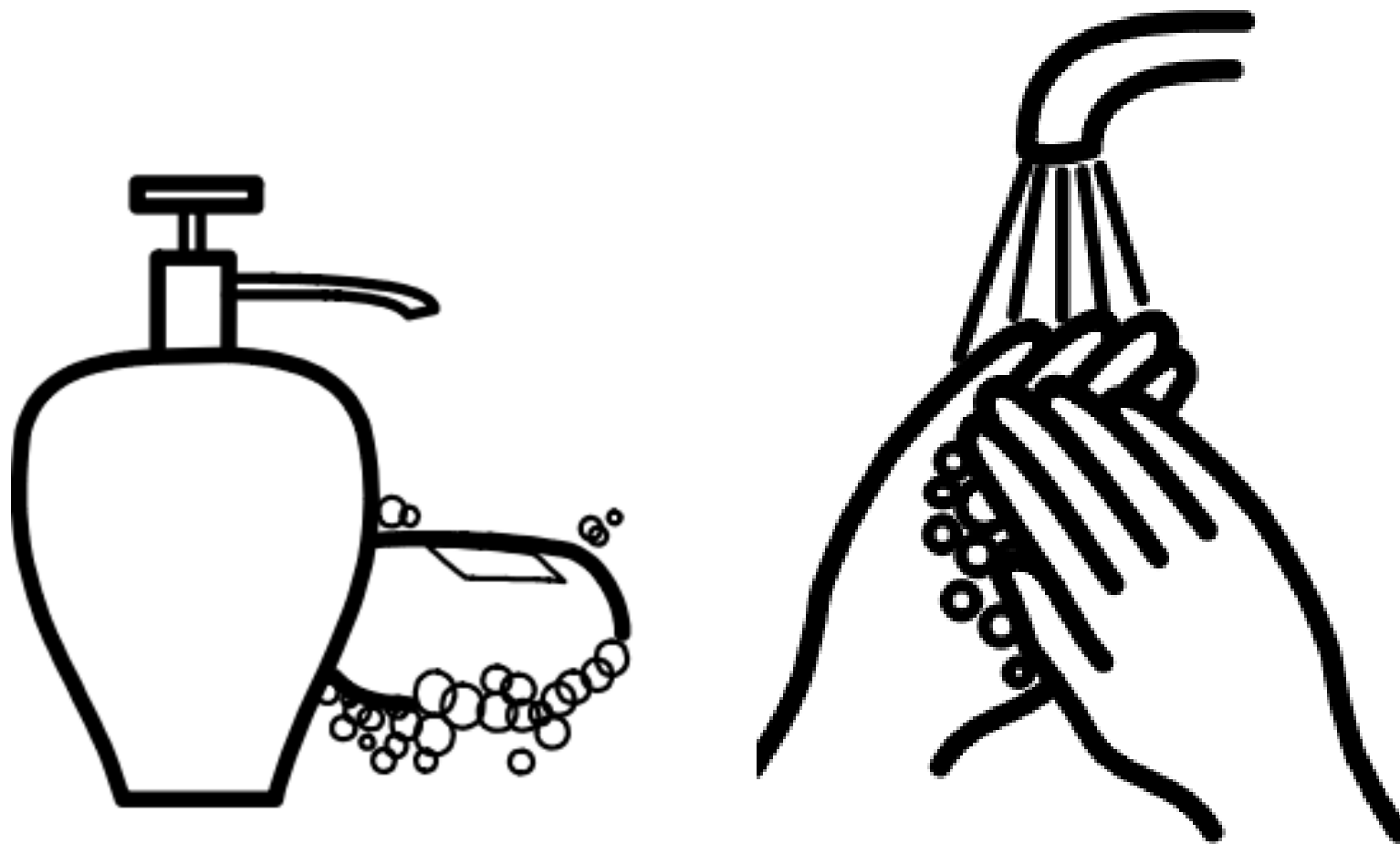
**NON**



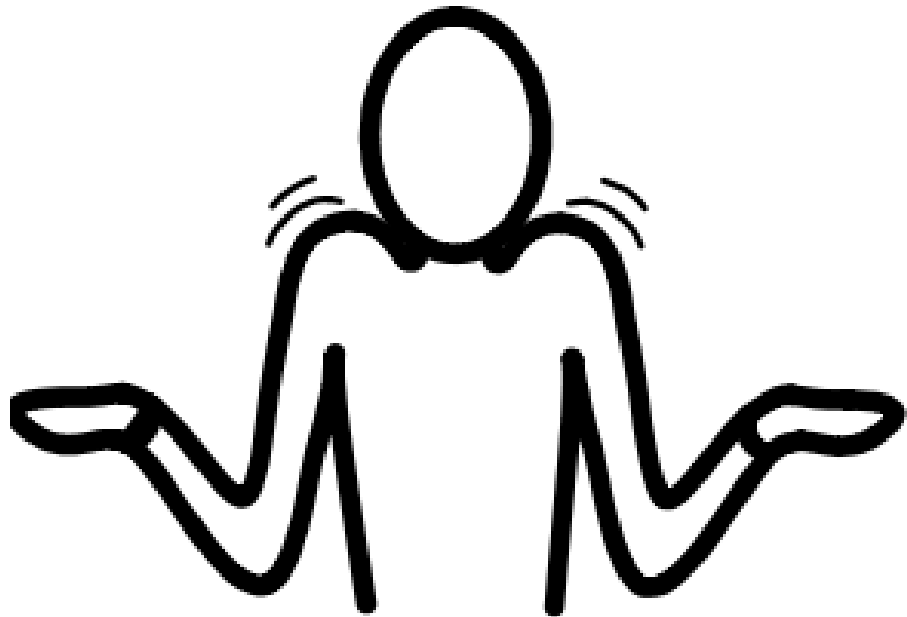
**STARE IN GRUPPO**



**E' IMPORTANTE LAVARSI SPESSO LE MANI**



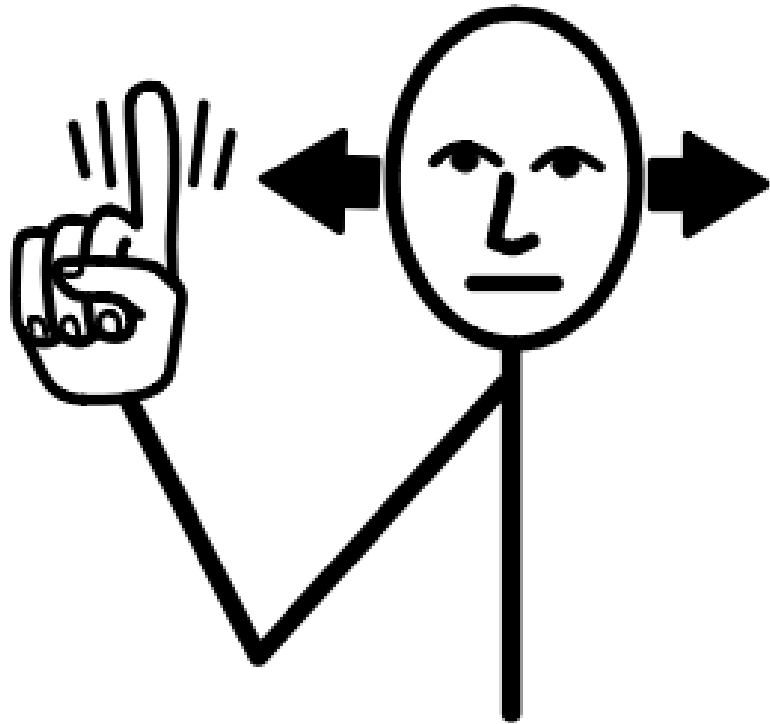
**ECCO**



**PERCHE'...**



**NON**



**C'E' LA MESSA**



**METTIAMO LA  
MASCHERINA**

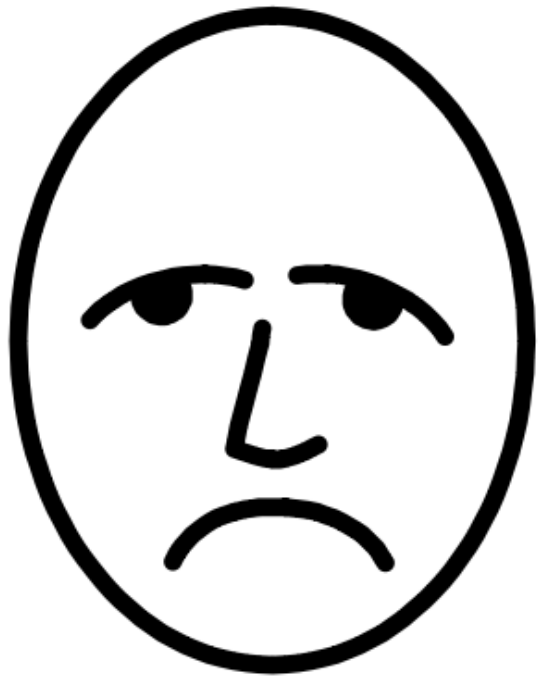


**NON SI ESCE**

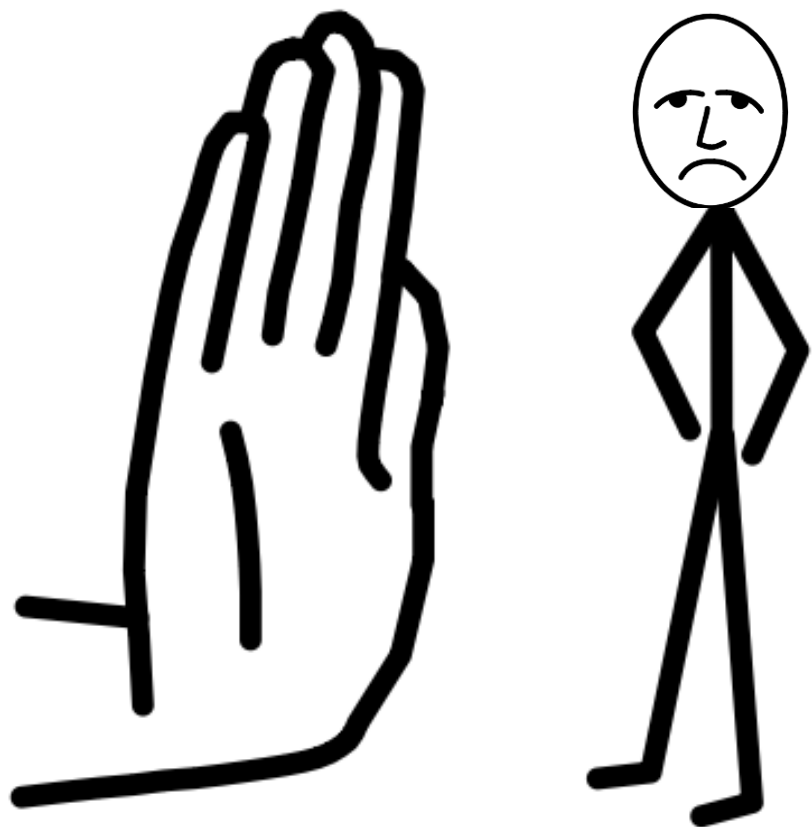




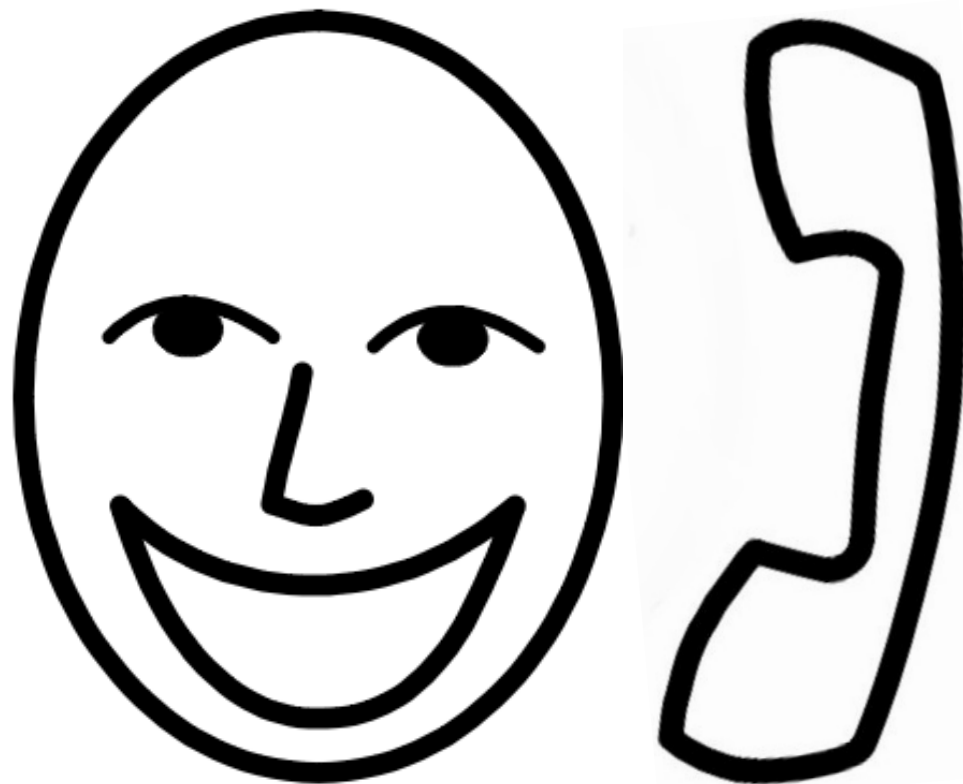
# LE PERSONE NON POSSONO VENIRE A TROVARCI



# E GLI AMICI E I PARENTI NON POSSONO ENTRARE A CASA FAMIGLIA



**ADESSO TELEFONIAMO AGLI AMICI  
e AI PARENTI**





Realizzato dalla Psicomotricista Elena Mantovani  
Casa Famiglia Padre Francesco Spinelli